

# *Project Ideas & Instructions for ScanNCut*

Tips for Bringing Your Craft Ideas to Life



# *Enjoy Handcrafting with Greater Versatility and Creativity.*

All the fun and excitement of making crafts, using paper, fabric, leather, plastic, rhinestones, and more – savor the thrill and satisfaction of fashioning a wide variety of materials into unique pieces that enrich daily life and special moments.

Cut, glue, and decorate to create decor, accessories, special gifts, and art that expresses who you are. Here you'll find a wealth of creative ideas for getting the most out of creative handcrafting using ScanNCut.





# Contents

---

PROJECT 01  
Rhinestone Candle Holder 03

PROJECT 02  
Stickers 07

PROJECT 03  
Mask 09

PROJECT 04  
3D Box 11

PROJECT 05  
Fold-out Card 13

PROJECT 06  
Paper Flower Arrangement 15

PROJECT 07  
Room Mobile 17

PROJECT 08  
Collage Photo Frame 19

PROJECT 09  
Painted Garden Boxes 21

PROJECT 10  
Felt Coasters 23

PROJECT 11  
Rubber Stamp Sheet 25

PROJECT 12  
Toy Magnet Sheet 27

PROJECT 13  
Mirror Welcome Panel 29

PROJECT 14  
Dress Decorations 31

PROJECT 15  
Baby Bib 33

PROJECT 1  
Shopping Bag 35

Ornaments 37

Why try ScanNCutCanvas? 41

Top screen  
Important Features  
Button Functions

Optional Accessories 42

Additional Accessories  
Middle Tack Adhesive Mat 12" x 12"

Rhinestone Starter Kit  
Rhinestone Sheet Set  
Rhinestone Transfer Sheets  
Printable Sticker Starter Kit  
Printable Sticker Sheet Set



Materials provided by  
Kuretake Co., Ltd. <http://www.zig-kuretake.com>  
Kaisercraft <http://www.kaisercraft.com.au>  
SUNFELT Co., Ltd. <http://sunfelt.co.jp/>

PROJECT 01 | Rhinestone Candle Holder

# Add a glow to your special occasion with this festive candle holder.

This lovely holder shines with candle glow and rhinestone sparkle, and conveys a festive welcome to special guests.









## Material

Dimensions (when finished):

Flat – 3.94" x 11.5"

Tube-shaped section – 3.94" tall x diameter 3.66"

Rhinestone-decorated section – 3.71" x 8.11"

Fabric: 1 kind (3.94" x 11.5")

Glass candle holder, double-sided tape

- Accessories available separately
- Rhinestone Starter Kit (Rhinestone size: SS10 used)
- Iron-on fabric appliqué contact sheet

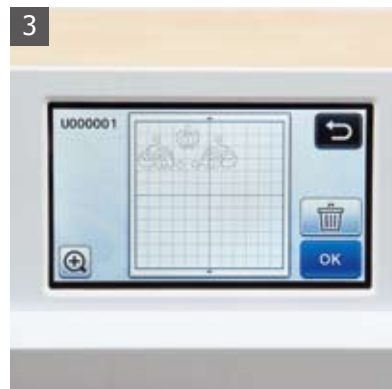
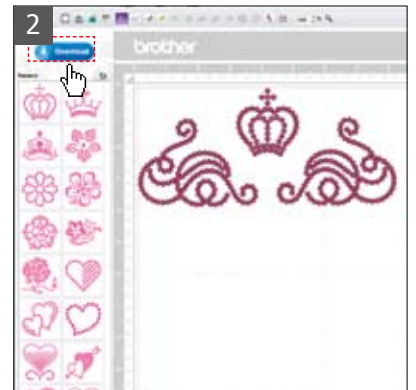
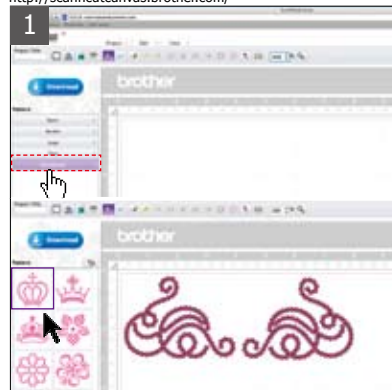
### Preparations

Purchase the Rhinestone Starter Kit and enter the activation code on the activation card.



- 1 Create the rhinestone patterns. Using ScanNCutCanvas (<http://scanncutcanvas.brother.com/>), select 'Rhinestone', then select the built-in pattern.  
ScanNCutCanvas Built-in Patterns: Crown  
Spiral
- 2 Use ScanNCutCanvas to lay out the selected patterns, then download them to your USB flash drive.
- 3 Load the designs downloaded to your USB flash drive in step 2 into the machine.
- 4 Attach the template sheet from the Rhinestone Starter Kit to the cutting mat, leaving the backing paper attached, and perform cutting.
- 5 Peel off the backing paper from the cut template sheet by pulling it to the side using a quick motion.

<http://scanncutcanvas.brother.com/>





**Tip** Decorate napkins and placemats with rhinestones to create matching place setting items.

- 6** Using the kit box as shown in the photo, mount the cut template sheet on the backing board. Place rhinestones on the mounted template sheet and use the brush and pickup tool from the kit to maneuver them into the holes.

Position all the embedded rhinestones so that their front (shiny surface) is facing upward, then cover them from above with the transfer sheet.

- 8** Firmly press down on the transfer sheet to make the rhinestones adhere properly, then peel back the transfer sheet.

- 9** Make the fabric wrap for holder. First, use an iron to transfer the iron-on fabric appliqué contact sheet to the base fabric. Leave the backing paper attached at this time. Peeling off the backing paper and applying the iron at the rhinestone-studded side might cause rhinestones to stick to the iron. Next, place the base fabric on the ironing board, then lay the transfer sheet with rhinestones over the fabric. Lay a piece of cloth over the fabric and transfer sheet, then transfer the rhinestones to the base cloth by ironing (at medium heat).

- 10** Allow to cool, then peel off the backing paper. Place over the glass candle holder to complete the piece.





# Enjoy grownup fun with these decorative stickers.

Personalize your favorite possessions with these stickers of your own design. Let the time you spend combining illustrations and text spark your creativity – you might even discover a fun new hobby.





## Material

Dimensions (when finished): Shark sticker – 6.49" x 6.81"

- Accessory available separately  
Printable Sticker Starter Kit



**Tip** Your own sticker designs are great for decorating small kitchen items.

**1** Print the design you want onto a printable sticker. Perform printing using settings appropriate for sticker printing.

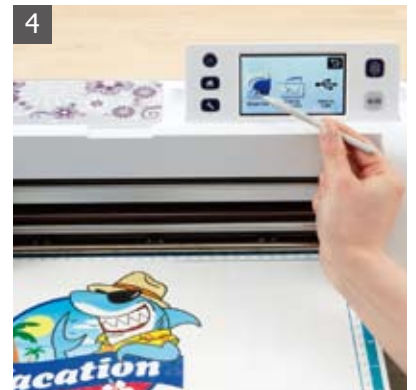
**2** Attach a laminate sheet to the printed sticker.

**3** Using a scraper or a ruler, affix the sticker, working out any air bubbles. Wrapping the scraper or ruler in a piece of cloth can make it easier to use and produce better results.

**4** Mount the sticker on the cutting mat and select 'Direct Cut'.

**5** Perform partial-depth cutting. Do a cutting test before carrying out the actual cutting.

**6** After cutting, carefully peel off the sticker and affix it at the desired location.



# A fun and festive mask to celebrate holiday cheer.

Delight your child with this charming bunny mask that is sure to please and excite all ages during your springtime events.



## Material

Dimensions (when finished): 8.98" x 11.49"

Paper: 9 kinds

Fabric: 1 kind

Bunny face: 8.26" x 11.49", eye holes (each): 0.86" x 0.91", eyeglasses: 2.43" x 5.95", ear-band hole diameter: 0.23", egg: 1.47" x 1.22"

Faux fur, rhinestones, feathers, ribbon, beaded elastic string, beads, glue

●Accessory available separately

Iron-on fabric appliqué contact sheet



**Tip** When attaching the eyeglass part, arranging it to match the three points on the stars as shown in the figure can make for a more attractive design.

- 1** Make the bunny parts.  
First, load the built-in pattern for the bunny and save it on your USB flash drive, and import the pattern into ScanNCutCanvas (<http://scanncutcanvas.brother.com/>) from your USB flash drive.

Next, from the basic shapes, select a rectangle. Resize it until it is large enough to cover the entire area beneath the bunny's eyes, and lay it out. Select everything, and use the "Shape Cutout" editing function.

Built-in Pattern: AR-I023 (part B)

ScanNCutCanvas Built-in Pattern: Rectangle

ScanNCutCanvas Function: Shape Cutout

- 2** In ScanNCutCanvas, choose the rectangle and resize it so that it is just large enough to cover the bunny's eyes, and place it.  
Select all pieces and use the "Welding" editing function to join them together, then save them onto your USB flash drive.

ScanNCutCanvas Built-in Pattern: Rectangle

ScanNCutCanvas Function: Editing Functions (Welding)

- 3** Load the part saved on your USB flash drive in step 2 into the machine. Enlarge it to maximum size, keeping the vertical and horizontal sizes proportional. Select the built-in pattern for eyeglasses, then resize and arrange it as shown in the photo.

Built-in Pattern: AR-F010

- 4** Choose the built-in pattern for the star to use for the mask's eye holes. On the eyeglass part joined in step 3, arrange two stars as shown in the photo.

Built-in Pattern: BA-A073

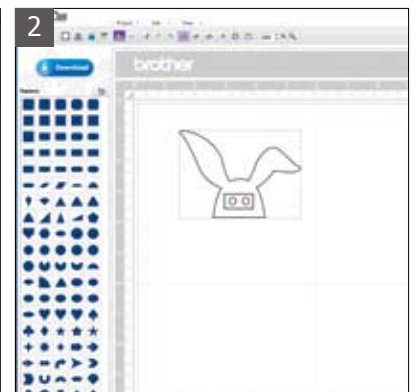
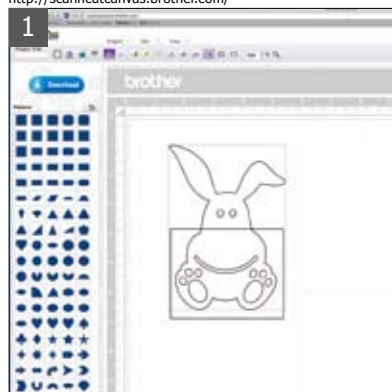
- 5** Place the eyeglass part at a location away from the bunny part, then group the eyes and face using Unify and save. Select a circle built-in pattern (for the ear-band holes), arrange two circles at the edges of the eyeglasses, and group the parts using Unify.

Built-in Pattern: BA-A045

- 6** Cut out the parts on the paper of your choice, and decorate with feathers, faux fur, rhinestones, lamé ribbons, and the like. Attach elastic bands for the ears to complete.

Built-in Patterns: AR-A011 x 2, AR-A013 (part A) x 2, AR-A014 AR-A020 (part A), AR-I025 x 2

<http://scanncutcanvas.brother.com/>





# Elegantly express your sentiments with this heart-shaped box.

At special occasions, presentation is an important part of hospitality. Let this handcrafted heart-shaped box serve as symbol of your feelings. Perfect as wedding favors, these lovely boxes also make wonderful containers for sweets and other small gifts.



## Material

Dimensions (before decoration): 3.98" x 3.94" x 0.80"

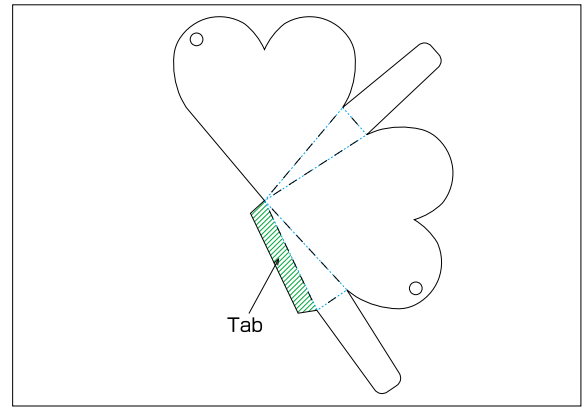
Paper: 5 kinds

Heart-shaped box: 8.17" x 6.06"

Glue, satin ribbon

●Accessory available separately

Scanning Mat: 12" x 12"



**Tip** When assembling the box, fold at the blue lines. Apply enough glue to the tabs to ensure secure attachment.

- 1 Make the cut data for the unfolded heart-shaped box. Use Scan to Cut Data to scan the diagram of the unfolded heart-shaped box in the Ornaments section (page 37).
- 2 Set Delete Size to the minimum and load all data, use Unify to group the patterns, and then cut the data.
- 3 Fold the box as shown in the photo, and assemble it. Apply glue to the tabs and attach.
- 4 Select the built-in patterns and cut them out on the paper of your choice.  
 Built-in Patterns: AR-A011 x 1  
 AR-A015 x 2  
 AR-J014 x 1  
 LO-A069 x 1



- 5 Apply glue to the cut-out parts and attach them to the heart box as decorations.
- 6 Pass the satin ribbon through the holes in the box.



# A whimsy fold-out card delivering surprise and delight.

Open the card, and a Christmas scene jumps right out, showing a merry holiday world. Embellish the card with your own ideas that will make the recipient feel special every time the card is opened and create a memorable Christmas mood.





## Material

Dimensions (when opened): 9.21" x 6.69"

Paper: 2 kinds

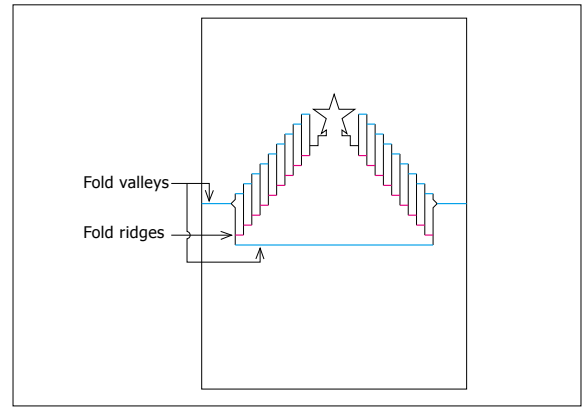
Inner base paper: 8.82" x 6.30"

Outer base paper: 9.21" x 6.69"

Glue, scoring paper knife

●Accessory available separately

Scanning Mat: 12" x 12"



**Tip** Fold the red lines into ridges, and the blue lines into valleys. Use a scoring paper knife, ruler, or similar tool to make straight-line creases. This will simplify folding and produce more attractive results.

**1** Make the inner section.  
Use Scan to Cut Data to scan the tree in the Ornaments section (page 38), then group the patterns using Unify.

**2** Select the built-in patterns and arrange them as shown in the photo, then cut them out using the paper of your choice.

Built-in Patterns: BA-A045 x 8  
BA-A074 x 9  
LO-A041 x 1

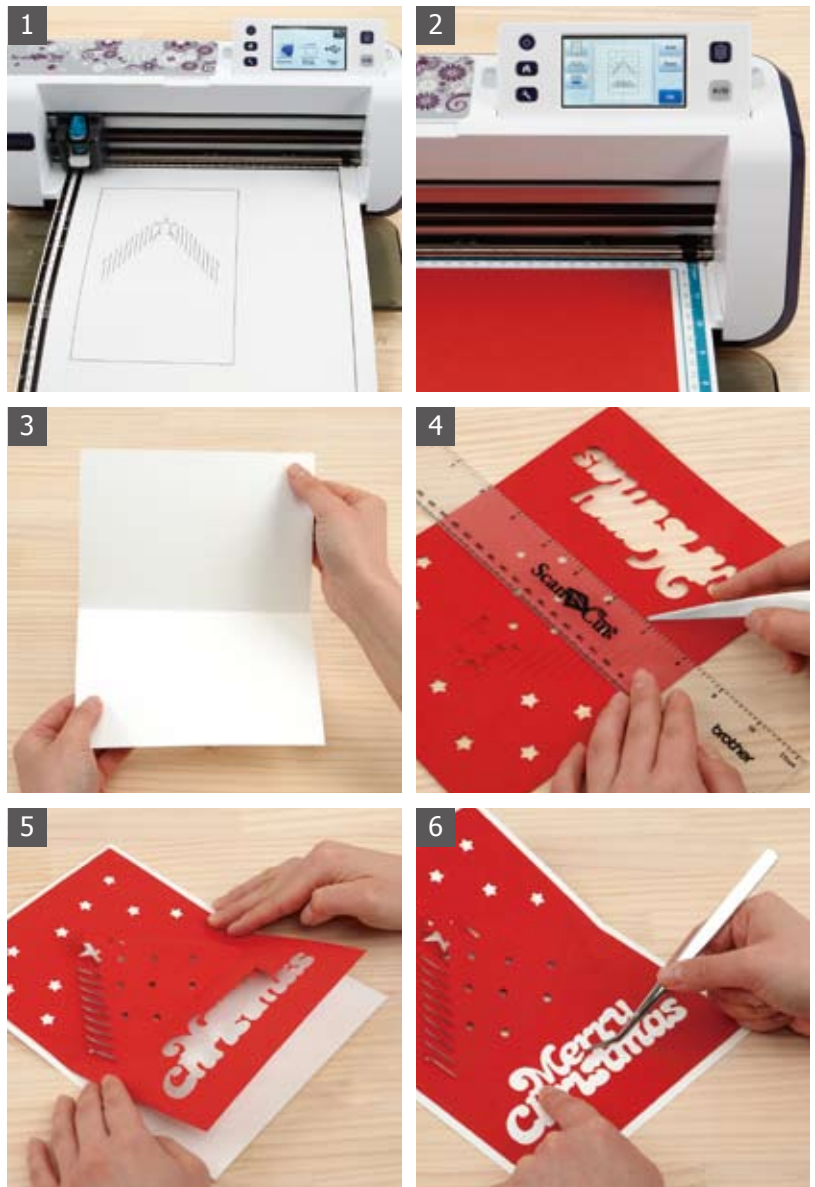
**3** Make the outer portion.  
Cut out the rectangular built-in pattern on paper, and fold it in half.

Built-in Pattern: BA-A001

**4** Use a scoring paper knife or a similar tool to make a line between the slits in the cut-out tree. Carefully fold it as shown in the photo. Form it slowly with reference to the illustration.

**5** Glue the inner and outer sections together.

**6** Glue on the pieces for the holes in the letters to complete the card.



# Create your own beautiful roses, and decorate your home in joy.

Create roses in your own unique colors, using your favorite papers, and make beautiful arrangements in cardboard or cloth boxes. They never need watering! The joy of paper crafting is when you realize your own special ideas and sense of beauty.



## Material

Dimensions (when finished and open): 4.31" x 4.31"

Paper: 1 kind

Petal (a) 3.33" x 3.44"

Petal (b) 3.67" x 3.78"

Petal (c) 4.32" x 4.47"

Petal (d) 5.09" x 5.28"

Stem (e) 8.16" x 2.19"

Glue, curling paper knife

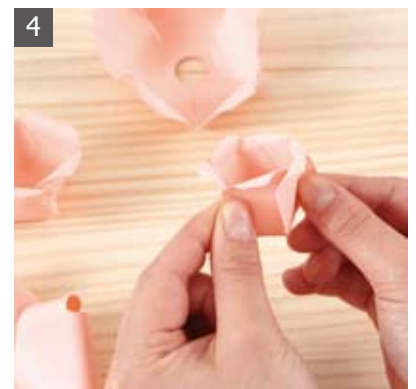
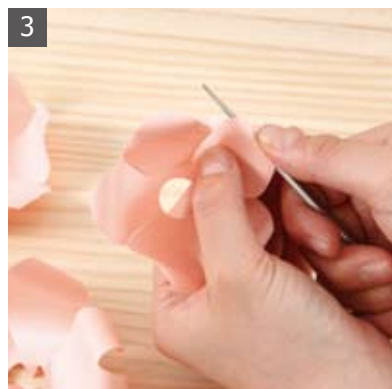
●Accessory available separately

Scanning Mat: 12" x 12"



**Tip** Use the tab on the back of the stem to glue it to a box for even more impact.

- 1 Use Scan to Cut Data to scan the rose (page 39). Set Delete Size to the minimum and load all data, using Unify to group the patterns. Cut them out on the paper of your choice.
- 2 Use the curling paper knife to apply a curl to the stem (e), and glue it down. Twist the petals as shown in the photograph, and glue them along the dashed lines.
- 3 Curl petals (a), (b), (c), and (d) inwards, but curl their tips outwards.
- 4 Glue petals (a) and (b) so that they overlap adjoining petals, as shown in the photograph. Spread petal (b) out wider than (a) for a more beautiful flower.
- 5 Pass the stem (e) from below through petals (a), (b), (c), and (d) in that order, and attach the stem (e) to petal (d) using the tab.
- 6 Adjust the petal shape and orientation for the most beautiful design.





# Add flair to any event with a hand-crafted mobile.

This gently turning mobile will bring a festive touch to any celebration. Choose whimsical designs, cut them out, then position them in a balanced arrangement to complete an aesthetically pleasing mobile. Create lasting memories for weddings and other occasions for years to come.



Created by よしいくえ (Yoshii Ikue)

## Material

Dimensions (when finished): 25.20" x 16.54"  
The size will vary with string length.

Paper: 8 kinds

Heart (pink): 2.76" x 2.76"

House (orange): 4.72" x 4.02"

Person (black): 1.26" x 1.57"

Ring (light pink): 2.48" x 1.97"

Bells (blue and yellow): 2.95" x 3.15"

Bird (blue): 1.26" x 2.95"

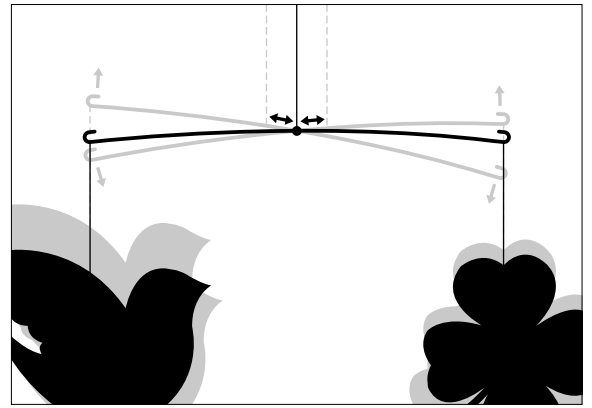
Clouds (white): 2.36" x 3.94"

Clover (green): 3.31" x 3.35"

String, wire, masking tape, crimping beads, adhesive, needle-nose pliers

● Accessory available separately

Scanning Mat: 12" x 12"



**Tip** To balance the mobile, move the string in the parts as shown to balance each wire. When joining the short and long wires together, balance them in the same way.

- 1** Make the mobile parts.  
Select the heart-shaped built-in pattern, then cut it. Scan the other parts on the machine, then use Scan to Cut Data to create the cutting data and cut the parts.  
Built-in Pattern: BA-A067



- 2** Use masking tape to hold the cut parts in place temporarily, then make the mounting holes with the pin. Pass string through the holes, run the string through the crimping bead, and crimp on a flat spot using the needle-nose pliers to secure.



- 3** When all parts have been strung, join the upper and lower parts together.



- 4** Attach the wires.  
Attach parts to both ends of each short wire and to one end of each long wire.



- 5** Attach string at the center of each short wire, adjust the balance, then secure in place using adhesive.



- 6** Join the short and long wires together. Adjust the balance of the long wires, then secure in place using adhesive.



# A vintage inspired collage frame with hand-crafted warmth.

This charming piece is made using old-time illustrations and fabric ribbons. Convey your special thoughts to the recipient with this hand-crafted frame that will add warmth to any room.





## Material

Dimensions (when finished): Frame – 9.36" x 12.81"

Paper: 2 kinds

Base paper: 8.27" x 11.65"

Floral-pattern paper: 4.67" x 4.94"

On-hand items such as illustrations, lace paper, antique paper, used envelopes, lace, decorative items (small frame, pocket watch, birdcage, metal pieces, rhinestones, buttons, antique glass, pearls, ribbon, etc.), hologram stickers, glue gun (or adhesive), transparent sheet, indelible markers, whiteboard pen



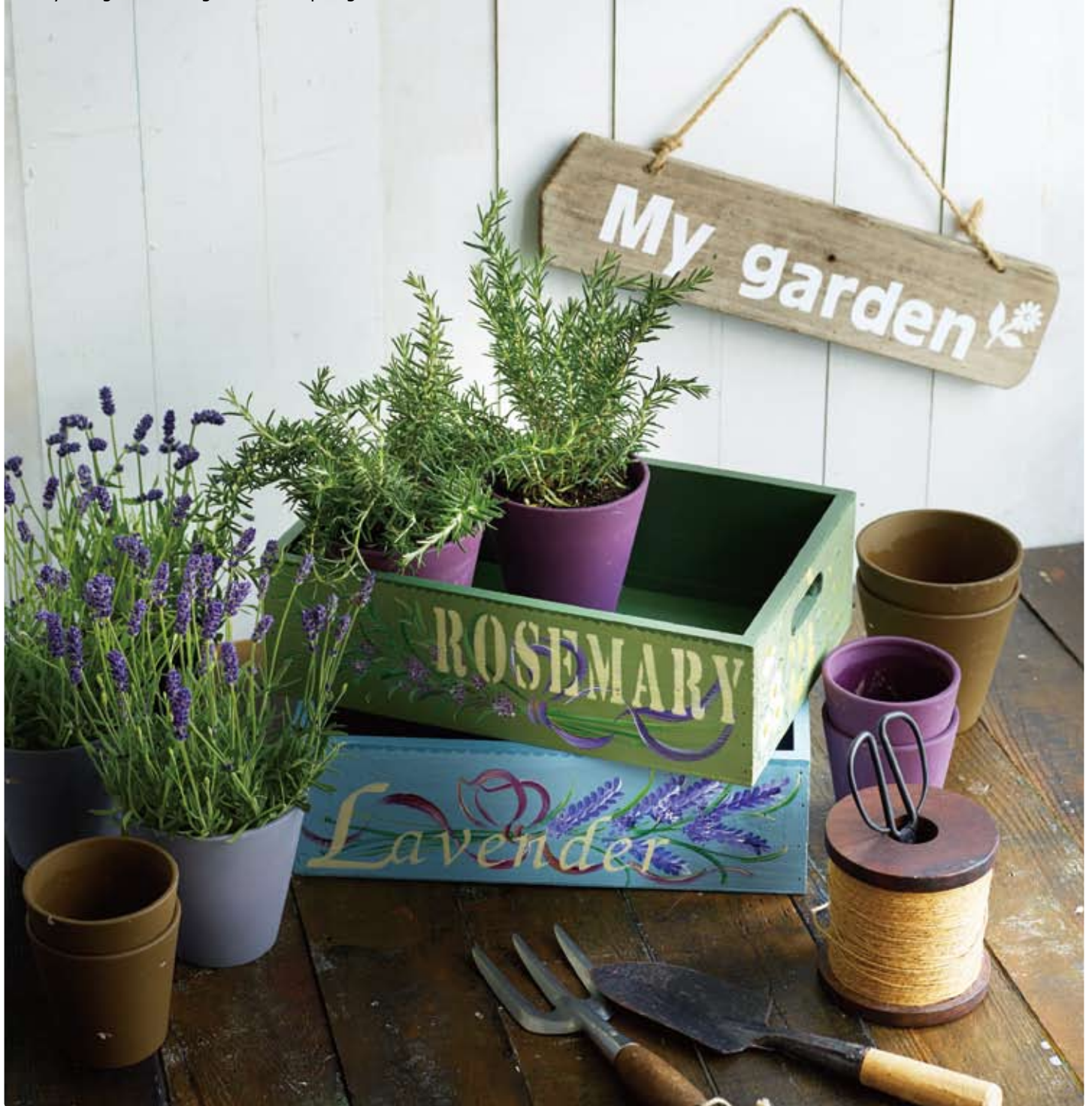
**Tip** Making several identically shaped copies of an illustration piece and attaching them in stacked fashion adds greater depth to the finished results.

- 1** Make the parts from illustrations. Place illustrations of your choice on the cutting mat and cover with a transparent sheet.
- 2** Using an indelible marker pen or a whiteboard marker, trace the outlines of the illustrations on the transparent sheet.
- 3** Insert a piece of white paper between the illustrations and the transparent sheet, being careful to ensure that the transparent sheet and the sheet with the illustrations do not become misaligned, and scan using Direct Cut.
- 4** After scanning, remove the transparent sheet and white paper, and cut the illustrations.
- 5** Make the frame. Decorate using lace, antique cards, fancy ribbons, and other such items arranged in an attractively balanced way.
- 6** Glue the illustration pieces in place. For a greater sense of depth, use 3D tape or the like to attach the cut pieces.



# Small painted garden boxes that express your style.

Transform your garden into a space that is all your own with these enchanting painted boxes. Design and cut personalized stencils and use them to decorate planters and pots to liven up your garden or give as unique gifts.





## Material

Dimensions (when finished):

Wooden box – 5.53" high x 15.24" wide  
x 10.63" deep

Stencil film (or sturdy paper)

Text: ("ROSEMARY"): 2.27" x 9.44"

Wooden boxes, round stencil pen (or sponge), acrylic paints, chalk (for the base sketch), masking tape, flat pen, varnish



**Tip** To stencil letters that have voids, use double-sided tape to attach pieces for the void areas before stenciling.

**1** Create the text to use on the stencil plates. Adjust the size of the stencils as needed to fit the walls of the boxes where they will be used.

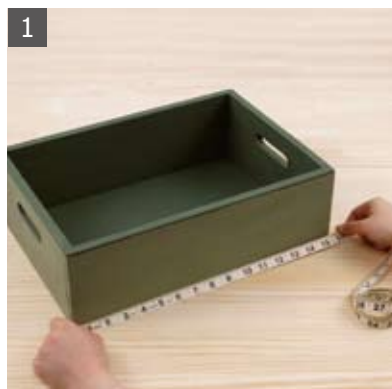
**2** Use chalk to sketch a base draft of the designs and text to stencil directly onto the boxes.

**3** Select one of the machine's built-in text fonts, type in the text, and adjust the size.  
Built-in Pattern: FO-A004

**4** Mount stencil film (or sturdy paper) cut to the appropriate size on the cutting mat, mount the cutting mat on the machine, and cut the stencil.

**5** On boxes already painted in colors of your choice, draw the decorative illustrations. When the paint has dried, use masking tape to secure the stencil film (or sturdy paper) from step 4 to the boxes, then stencil the text onto the boxes.

**6** When the stenciled paint has dried, varnish all box surfaces. Varnish is applied to help prevent mold, dry rot, and leaks.





# Felt Coasters & Doilies – perfect for entertaining.

The soft and gentle feel of felt makes it an ideal material for creating table decor adorned with flowers and birds that invoke tranquility and elegance to any special occasion.



## Material

Dimensions (when finished): Coaster – 3.42" x 3.42"

Hard felt (7.09" x 7.87")

- Accessory available separately
- Iron-on fabric appliqué contact sheet



**Tip** Felt coasters are easy to make using a variety of different built-in patterns.

- 1 To combine several built-in patterns to create the coaster design, use ScanNCutCanvas (<http://scanncutcanvas.brother.com/>). Select the built-in patterns and decide on the coaster's outer design.  
Built-in Pattern: BA-A050

- 2 Make the design for the holes in the coaster. From the basic shapes, import the shape shown below. Make it smaller, make copies, lay them out, then use Divide to group them and download them to your USB flash drive.

Built-in Patterns: BA-A045  
BA-A072  
BA-A088  
BA-A091  
BA-A102

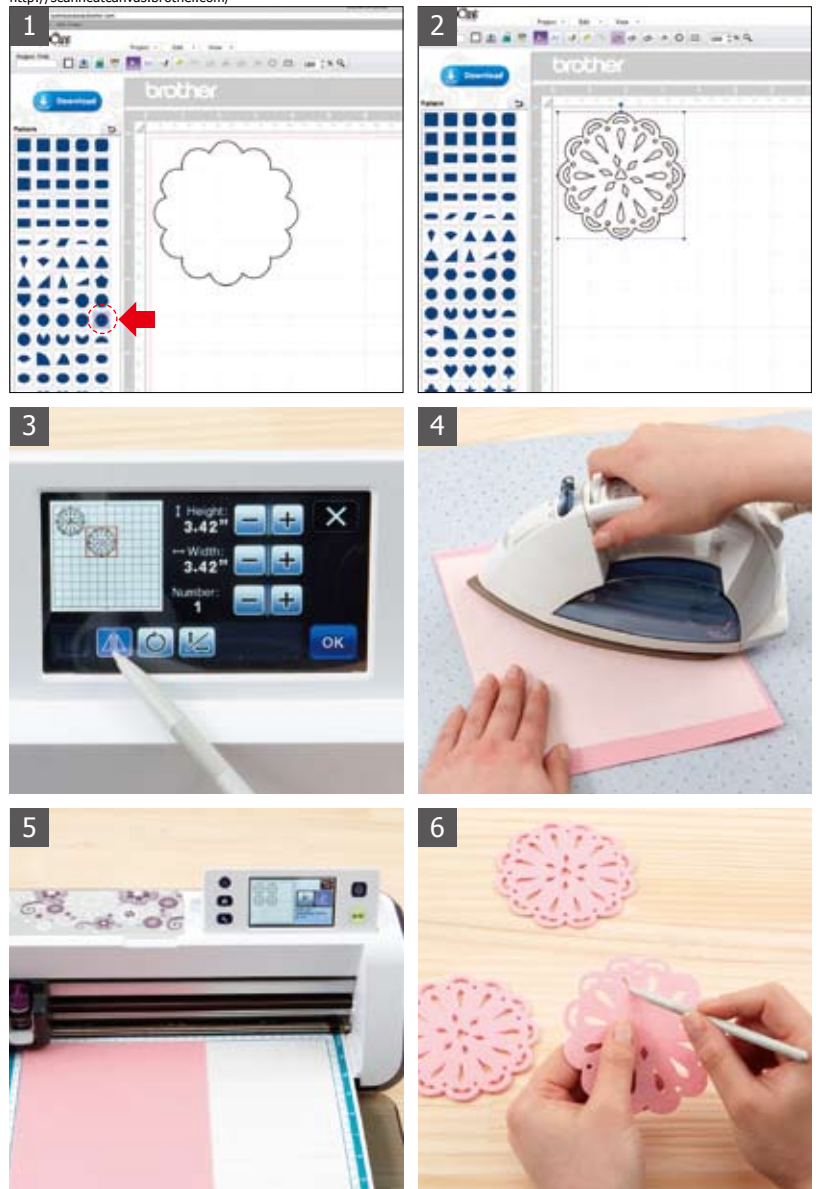
- 3 Load the data downloaded to your USB flash drive into the machine, and set the quantity to 2. Flip one set of data for stacking on the other one.

- 4 Using an iron, attach an iron-on fabric appliqué contact sheet.

- 5 Peel off the backing paper of the iron-on fabric appliqué contact sheet from the felt, then mount the felt piece on a cutting mat and perform cutting.

- 6 Detach the cut felt from the cutting mat. Using a stylus or similar tool to press out the cut-out areas can make the felt easier to detach. Place the felt pieces together with the adhesives surfaces of the iron-on fabric appliqué contact sheets facing, then cover the pieces with a piece of cloth and iron the pieces to attach them together.

<http://scanncutcanvas.brother.com/>





# Unique stamps that add splendor with every press.

These stamps add a personal touch to notes, cards, and letters. Cut words and figures that express your sentiments to make delightful stamps that add fun with every press.





## Material

Dimensions (when finished):

Printing surface of leaf-bordered stamp – 7.17" x 5.71"

Rubber sheet (0.04" thick)

Stamp block, adhesive, double-sided tape



**Tip** Many different kinds of stamp-pad inks are available, including some that can be used to stamp other materials besides paper.

- 1 Create the design for the stamp.  
Select from among the machine's built-in patterns.

Built-in Patterns: AR-E004  
AR-E010  
AR-H015  
AR-H013  
AR-C006 (L)  
AR-C006 (S)

- 2 Combine the built-in patterns and lay them out.

Built-in Patterns: BO-A014 X 4  
AR-K035 X 4

- 3 Cut the rubber sheet.

Replace the blade on the machine with the deep cutting blade specifically designed for thick material, then mount a rubber sheet on a cutting mat and perform cutting.

- 4 Detach the rubber sheet from the cutting mat and remove the cut-out areas.

- 5 Make the base.

Cut a rectangular or circular piece of rubber sheet of the same size as the rubber piece cut in step 4.

Built-in Patterns: BA-A013  
BA-A014 X 4  
BA-A025  
BA-A012

- 6 Using double-sided tape or adhesive, attach the cut rubber pieces from steps 4 and 5 to a stamp block of appropriate size to complete the rubber stamp.



# Magnets making playtime fun for both parent and child.

Kids love magnets. Give them a set of fun magnetic pieces made from magnetic sheets. Use them to create pictures for a one-of-a-kind interior decoration.





# Material

Dimensions (when finished): Frame – 13.19" x 17.13"

Magnetic sheet material (0.02" thick)

Cut sheet material: 16 kinds

Sun (red, yellow): 2.36" x 2.36"	Tortoise (light green, green): 1.04" x 1.57"
Large cloud (white): 1.06" x 1.57"	Dinosaur (light green, dark green): 1.98" x 3.15"
Small cloud (white): 0.80" x 1.18"	House (saffron, orange, tan): 1.34" x 1.57"
Tree (light green, tan): 2.48" x 2.03"	House (pink, dark pink): 1.59" x 1.28"
Cat (gray, red): 1.43" x 1.75"	Car (blue, dark green, black): 1.26" x 2.76"
Dog (white, red, gray): 1.17" x 1.57"	Bus (turquoise, yellow, black): 1.20" x 3.54"
Elephant (pink, gray, blue): 2.16" x 1.60"	Airplane (turquoise): 1.81" x 2.76"
Giraffe (saffron, tan): 2.56" x 1.23"	Balloon (red, aquamarine): 2.19" x 1.77"
Bird (orange, red): 0.74" x 1.18"	Sailboat (saffron, yellow, red, aquamarine): 1.99" x 1.99"
Rooster (white, red, tan): 1.51" x 1.38"	Ship (aquamarine, white, red): 1.50" x 2.36"
Duck (white, gray, saffron): 1.28" x 1.34"	Soccer ball (black, white): 0.98" x 0.98"
Large fish (blue, orange): 1.03" x 1.38"	Musical note (turquoise): 1.07" x 0.73"
Small fish (yellow): 0.74" x 0.98"	Musical note (dark green, light green): 1.23" x 0.88"



**Tip** When making pieces using built-in patterns like the boat and airplane that are composed of separate parts, the Unify editing function is handy for joining them together.

**1** Create the base.  
Prepare a picture drawn by you on your child to use as the background board. Thicker kinds of paper can make magnets hard to attach, so use copy paper or other similar thin paper.



**2** Place a metal panel under the background picture, then insert the panel and picture in a frame.

**3** Make the magnetic pieces.  
Select the built-in pattern of the sun.  
Built-in Pattern: AR-A005



**4** Cut the pieces.  
Replace the blade on the machine with the deep cutting blade specifically designed for thick material, then attach the red cut sheet part of the piece (part A) to the magnetic sheet and cut it.  
Built-in Pattern: AR-A005\_A



**5** Attach the yellow cut sheet part of the piece (part B) and cut it.  
Built-in Pattern: AR-A005\_B

**6** Cut and fashion the other pieces in the same way.  
Built-in Patterns: AR-A006 (L, S) AR-C008 AR-G004  
AR-A029 AR-C011 (L, S) AR-G006  
AR-C002 AR-C018 AR-G009  
AR-C003 AR-C025 AR-G010  
AR-C004 AR-E002 AR-H009  
AR-C005 AR-E003 AR-H022  
AR-C006 AR-G001 AR-H023  
AR-C007 AR-G002



# A welcoming mirror that reflects your gratitude.

Greet wedding guests with a welcome panel made from a mirror that is sure to liven up any interior space for years to come. The attractive and intricate design adds elegance to the couple's special day.



## Material

Dimensions (when finished): Mirror – 10.04" x 13.19"

Craft vinyl

Flower (AR-J009, AR-J015, AR-A020, AR-A027): 4.87" x 5.33"

Leaf (AR-A027): 1.62" x 1.74"

Flower (AR-J009, AR-J010, AR-J015, AR-A020, AR-A027): 3.90" x 4.94"

Leaf (AR-A027): 2.20" x 1.44"

Text ("Welcome to our home"): 3.90" x 4.94"

Text ("Jamie & Brandon"): 0.73" x 5.54"

Mirror, frame, glass etching cream, writing brush, transfer sheet



**Tip** Glassware and other glass objects are also easy to etch with designs.

**1** Decide on the composition and size of the design to put on the mirror.

**2** Select and lay out built-in patterns from the machine, and when the rough design is finished, save it on your USB flash drive.

Built-in Patterns: AR-J009 x 2  
AR-J0125 x 2  
AR-A020 x 2  
AR-A027 x 4  
AR-J010

**3** The design is of large size and the layout of built-in patterns is complex, so use ScanNCutCanvas (<http://scanncutcanvas.brother.com/>). Import the data saved on your USB flash drive into ScanNCutCanvas, then make the final fine-tuned adjustments to the layout.

**4** In ScanNCutCanvas, select a built-in font and lay out the text. Adjust the overall balance and download the data to your USB flash drive.

ScanNCutCanvas Built-in Patterns: Text

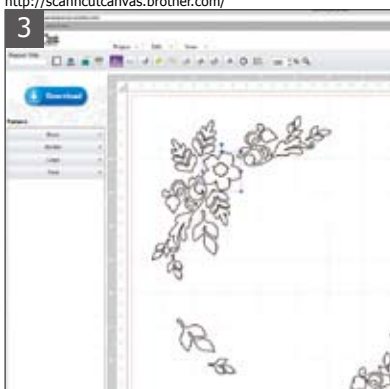
**5** Make the final design on the mirror.

First, load the design saved on your USB flash drive into the machine. Mount an adhesive cut sheet on a cutting mat and carry out cutting. Next, remove the cut material from the cutting mat and attach it to the mirror using a commercially available transfer sheet.

**6** Affix the adhesive craft vinyl to the mirror, then apply glass etching cream over it. Wait 30 minutes, then clean away the etching cream. The usage and removal methods vary according to the type of etching cream.



<http://scanncutcanvas.brother.com/>





# Floral corsage embellishments beautify any garment.

Make a special day even more memorable by decorating your child's dress with these hand-made floral corsages. The time spent crafting the dress and the smiles of the lucky girl who wears it are sure to make for treasured memories.





## Material

Dimensions (when finished): diameter 2.36"

Fabric: 4 kinds

Flower-petal parts (border pattern [BO-A008]): 1.16" x 11.02"

Flower: AR-A020

Large – 1.18" x 1.16", medium – 0.98" x 0.97",

small – 0.58" x 0.57"

Simple dress, buttons (or beads, spangles, etc.), needle, thread, fabric glue

●Accessory available separately

Iron-on fabric appliqué contact sheet



**Tip** A small floral corsage can be created by forming two or three layers of petals and attaching a button or spangle at its center.

**1** Decide on the number and size of the corsages to be attached to the dress.

**2** Using an iron, attach iron-on fabric appliqué contact sheets to the backs of all cloth pieces.

Built-in Patterns: BO-A008 x 8

AR-A020 (L x 2, M x 28, S x 7)

**3** Form pleats in each cloth piece used for the border, shortening its length by about half.

**4** Curl each piece from step 3 so that it resembles flower petals, then sew together to maintain its shape.

**5** Use needle and thread to sew a button at the center of each medium-size flower-petal piece cut using built-in pattern AR-A020 in step 2.

**6** Use fabric glue to attach the medium-size flower-petal pieces made using built-in pattern AR-A020 to the backs of each finished flower, then use fabric glue to attach the finished decorations to the dress.



# Express your love with a hand-made baby's bib.

Delight a new or expecting mother with something you've made by hand. This soft and gentle bib makes a great shower gift.



## Material

Dimensions (when finished): 8.09" x 7.87"

Fabric: 4 kinds

Bib (white): 8.09" x 7.87"

Candy decoration (pink): 1.87" x 1.89"

Balloon decoration (red, blue): 2.47" x 1.88"

Bias tape, hook and loop fasteners, small-diameter rope, string

● Accessories available separately

High-tack adhesive fabric support sheet

Iron-on fabric appliqué contact sheet



**Tip** Using hook and loop fasteners makes it easy to detach and rearrange the candy and balloon pieces.

**1** Make the bib.

Attach a high-tack adhesive fabric support sheet to a cutting mat, then attach cloth to the support sheet.

**2** On the machine, select built-in pattern AR-I038, then enlarge it to make the circumference of the neck about 8".

Built-in Pattern: AR-I038\_B x 2



**3** Sew bias tape to the edges of the piece from step 2.

**4** Make the decorative pieces for the bib.

First, use an iron to attach an iron-on fabric appliqué contact sheet to the pieces of felt. Next, select the built-in patterns for the candy and the balloon, then cut the parts.

Built-in Patterns: AR-B008\_B x 2

AR-G007\_A x 2

AR-G007\_B x 2

AR-G007\_C

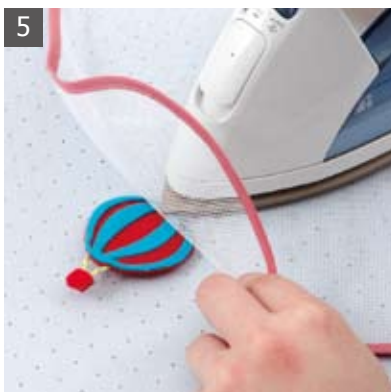


**5** Detach the felt pieces from the cutting mat.

Assemble the part A balloon parts with the adhesive sides facing, arrange the string between the assembled parts, then cover with a piece of cloth and bond the parts together by ironing. Sew the small-diameter rope arranged in a spiral to one of the part B candy pieces, then attach the other candy piece to it, with the string forming the stick sandwiched between the two pieces.

**6** Put the finishing touches on the bib.

Attach a hook and loop fastener at the back of the neck. Attach hook and loop fasteners on the bib and decorative pieces.





# Shop in style with this trendy grocery bag.

Items like shopping bags that get frequent use should be a reflection of your personal style. Enjoy choosing what shapes and colors to be used. Find just the right combination of textures as you fashion this bag of modern design.



## Material

Dimensions (when finished):  
12.40" x 17.72" (excluding the handles)

Real leather: 3 kinds  
Wine glass (light blue): 9.05" x 4.15"  
Label (brown): 1.88" x 2.87"  
Flower part (blue): 1.97" x 1.94"  
Faux leather: 1 kind  
Cork: 1.34" x 0.88"  
Flower part: 0.66" x 0.65"  
Laminated material: 3 kinds  
Wine in the glass (violet): 1.91" x 3.82"  
Wine bottle (violet): 8.83" x 3.56"  
Flower part (red): 0.91" x 0.94"  
Leaves (yellow-green): 2.96" x 3.62"

Simple bag, leather bond, vinyl bond



**Tip** You can make an attractive charm simply by cutting two identical pieces using the same built-in pattern. Then glue them together and add a chain.

**1** Measure the third-party bag you want to embellish, and decide on the designs to use.



**2** Make the decorative pieces. Select the built-in patterns for the wine bottle, glass, flower, and leaves and the semicircular basic shape, then flip them.

Built-in Patterns: AR-E020  
AR-A020  
BA-A053  
AR-E024  
AR-A025



**3** Cut the leather. Replace the blade on the machine with the deep cutting blade specifically designed for thick material, mount the leather on a cutting mat with its top (outer) surface facing the mat, then perform cutting.



**4** Enter the text using a built-in font, then angle it as shown in the photo.

Built-in Pattern: FO-A004



**5** Add the square from the basic shapes. Position it with the pieces from step 4, use Unify to group them, then flip and cut.

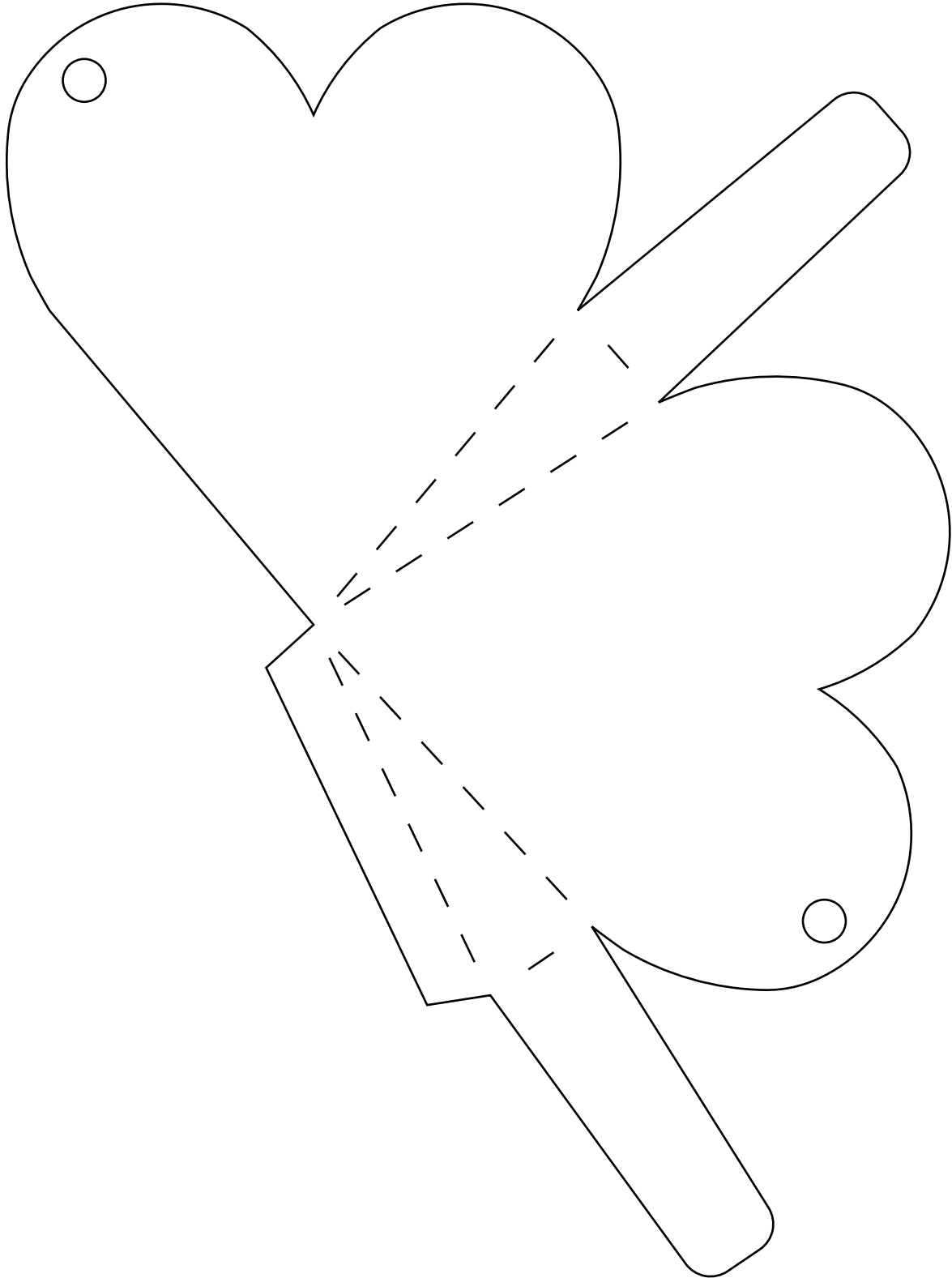


**6** When all decorative pieces have been cut, use leather and vinyl bond to attach them to the bag.



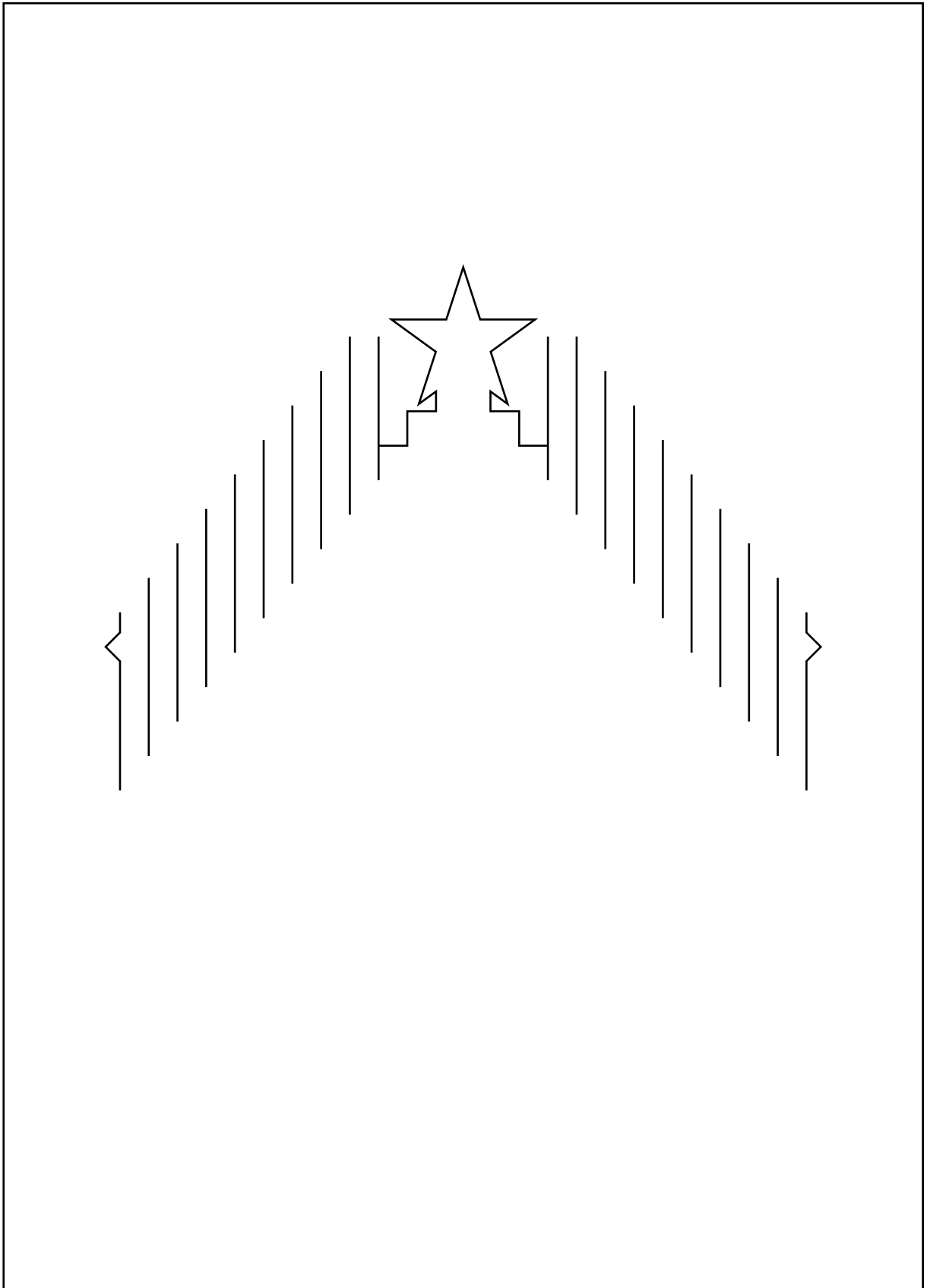
# Custom Designs for All Your Creative Needs

PROJECT 04  
3D Box  
Page 11



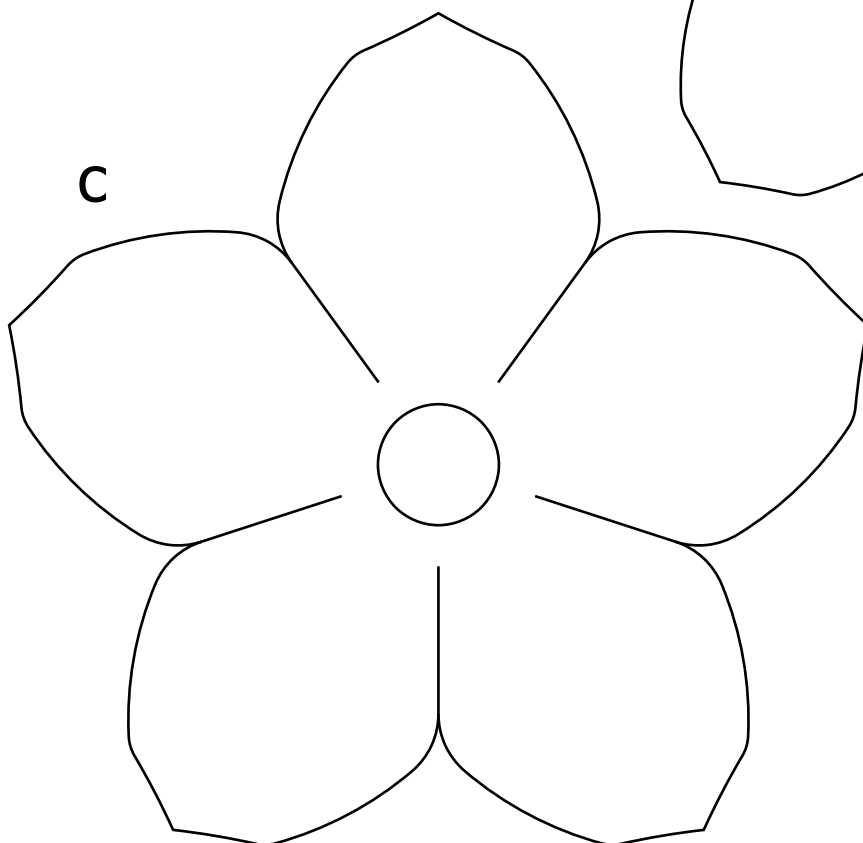
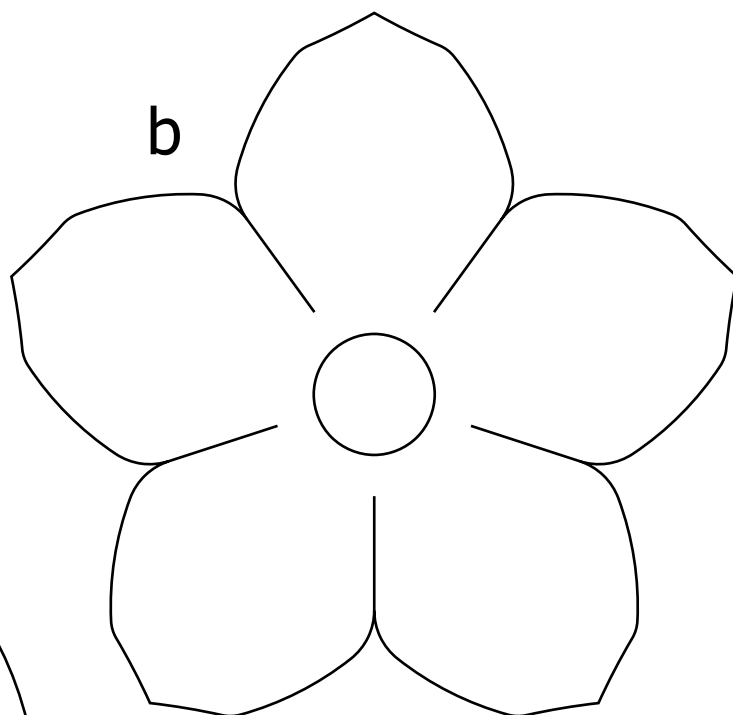
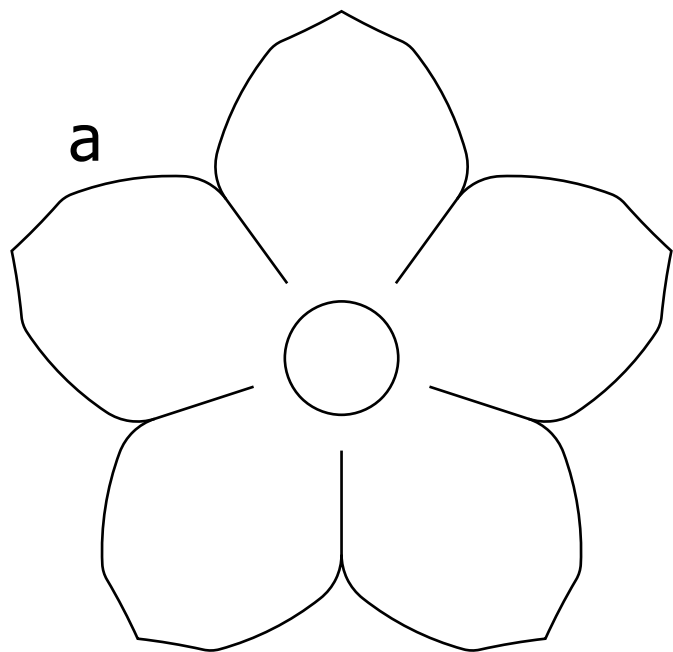


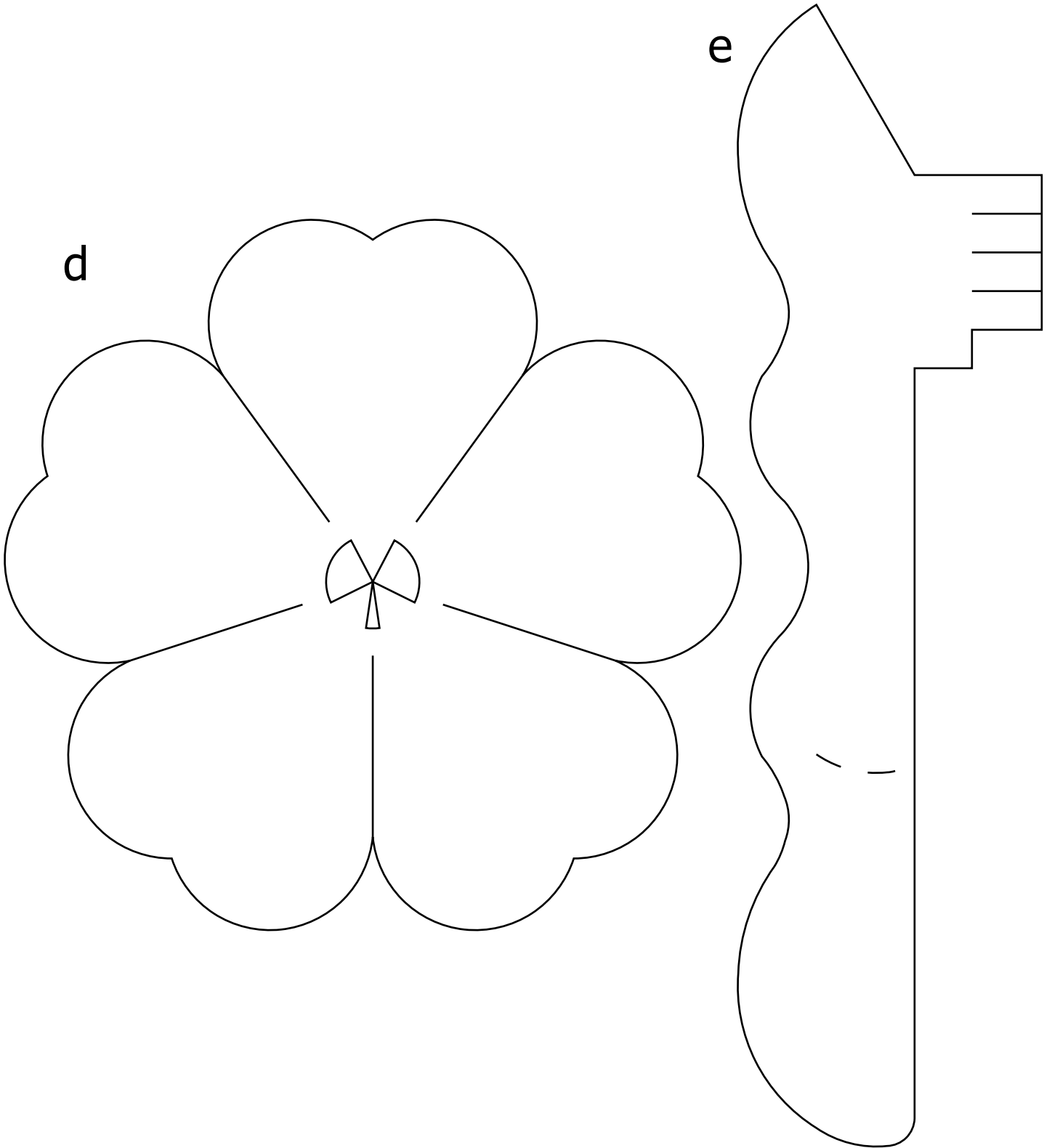
PROJECT 05  
Fold-out Card  
Page 13



# Custom Designs for All Your Creative Needs

PROJECT 06  
Paper Flower Arrangement  
Page 15







# Why try ScanNCutCanvas?

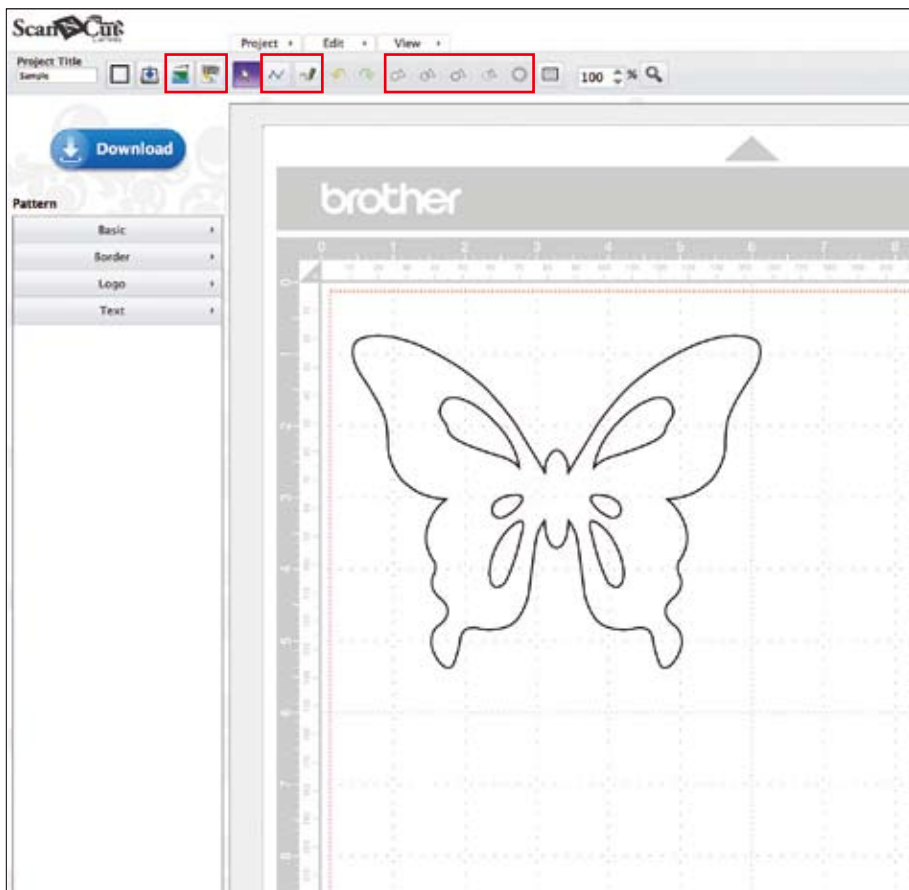
Visit URL <https://scanncutcanvas.brother.com/>

## Top screen









- No need to download additional software.
- Easily converts to .SVG files to .FCM files.
- Transfer files through the ScanNCut memory stick port.
- Create a personal account to save your designs.
- Enjoy a larger screen for editing.

## Important Features



## Button Functions

-  Image Tracing
-  Importing a SVG File
-  Path Tool
-  Freehand Path Tool
-  Editing Multiple Patterns
-  Creating Offset Lines

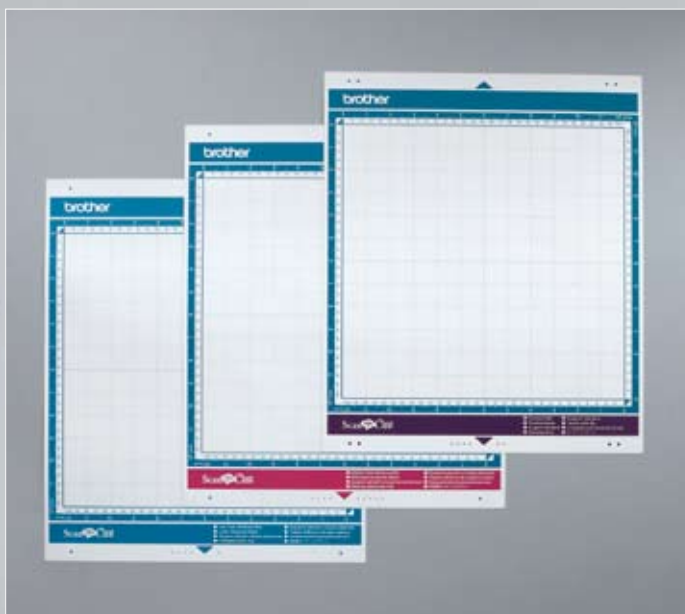
## Optional Accessories

### Additional Accessories



- ① Standard Mat 12"×12" ② Low Tack Adhesive Mat 12"×12" ③ Scanning Mat 12"×12" ④ Standard Mat 12"×24" ⑤ Low Tack Adhesive Mat 12"×24"  
 ⑥ Quilt Pattern Collection ⑦ Appliqué Pattern Collection ⑧ Erasable Pen Set ⑨ Pen Holder ⑩ Deep Cut Blade Holder ⑪ Standard Cut Blade Holder  
 ⑫ Color Pen Set ⑬ Deep Cut Blade ⑭ Standard Cut Blade ⑮ High Tack Adhesive Fabric Support Sheet ⑯ Iron-On Fabric Appliqué Contact Sheet

### Middle Tack Adhesive Mat 12" x 12"



The adhesive strength is between Low Tack Adhesive Mat and Standard Mat.

## Optional Accessories

### Rhinestone Starter Kit



This kit contains all the materials you need to create one-of-kind personalized rhinestone projects!

### Rhinestone Sheet Set



Template Sheet/ 3pcs. Transfer Sheet/ 3pcs.

### Rhinestone Transfer Sheets



Transfer Sheet/ 7pcs.

### Printable Sticker Starter Kit



Just print your favorite image, cut and create your own design stickers and labels! Great for crafters, small business, and home use.

### Printable Sticker Sheet Set



Printable Sticker / 7pcs. Laminate Sheet / 7pcs.

**brother**  
at your side

©2014 Brother Industries, Ltd. All rights reserved.  
All information correct at time of printing.